

Switch - FL SWITCH SFNB 5TX - 2891001

<https://www.phoenixcontact.com/in/products/2891001>

Please be informed that the data shown in this PDF document is generated from our Online Catalog. Please find the complete data in the user documentation. Our General Terms of Use for Downloads are valid.



Ethernet switch, 5 TP RJ45 ports, automatic detection of data transmission speed of 10 or 100 Mbps (RJ45), autocrossing function

Your advantages

- Auto negotiation and autocrossing detection simplifies installation and setup
- Local diagnostic indicators with LEDs
- RJ45 ports support a transmission speed of 10/100 Mbps

Switch - FL SWITCH SFNB 5TX - 2891001



<https://www.phoenixcontact.com/in/products/2891001>

Commercial Data

Order Key	2891001
Packing unit	1 pc
Minimum order quantity	1 pc
Sales Key	DNN
Catalog Page	Page 288 (C-6-2019)
GTIN	4046356457163
Weight per Piece (including packing)	275.6 GRM
Weight per Piece (excluding packing)	263.4 GRM
Customs tariff number	85176200
Country of origin	TW

Switch - FL SWITCH SFNB 5TX - 2891001

<https://www.phoenixcontact.com/in/products/2891001>

Technical Data

Electrical properties

Transmission medium	Copper
Maximum power dissipation for nominal condition	4.44 W
Local diagnostics	US Supply voltage Green LED
	LNK/ACT Link status/data transmission Green LED
	100 Data transmission speed Yellow LED

Supply

Supply voltage	24 V DC
Typical current consumption	185 mA (at $U_S = 24$ V DC)
Power supply connection	Via COMBICON, max. conductor cross section 2.5 mm ²
Supply voltage range	12 V DC ... 48 V DC
Max. current consumption	345 mA (at 12 V DC)
Residual ripple	3.6 V _{PP} (within the permitted voltage range)

Dimensions

Height	110 mm
Width	28 mm
Depth	70 mm

LED signaling

Status display	LEDs: U_S , link and activity per port
----------------	--

Material specifications

Housing material	Aluminum
------------------	----------

Interfaces

Ethernet (RJ45)

Transmission length	100 m (per segment)
No. of channels	5 (RJ45 ports)
Note on the connection method	Auto negotiation and autocrossing
Connection method	RJ45
Transmission speed	10/100 Mbps
Signal LEDs	Data receive, link status
Transmission physics	Ethernet in RJ45 twisted pair

Mounting

Mounting type	DIN rail
---------------	----------

Approval data

Conformity/Approvals

UL, USA/Canada	Class I, Div. 2, Groups A, B, C, D
----------------	------------------------------------

Switch - FL SWITCH SFNB 5TX - 2891001



<https://www.phoenixcontact.com/in/products/2891001>

EMC data

Noise emission	EN 61000-6-4
Conformance with EMC directives	IEC 61000-6-2 IEC 61000-4-2 (ESD) Criterion B
	IEC 61000-4-3 (immunity to radiated interference) Criterion A
	IEC 61000-4-4 (burst) Criterion B
	IEC 61000-4-5 (surge) Criterion B
	IEC 61000-4-6 (immunity to conducted interference) Criterion A
	IEC 61000-4-8 (immunity to magnetic fields) Criterion A
	EN 55022 (emitted interference) Criterion A
Noise immunity	EN 61000-6-2
Electromagnetic compatibility	Conformance with EMC Directive 2004/108/EC

Ambient conditions

Air pressure (operation)	86 kPa ... 108 kPa (up to 1500 m above sea level)
Ambient temperature (operation)	-10 °C ... 60 °C
Ambient temperature (storage/transport)	-20 °C ... 85 °C
Degree of protection	IP20
Air pressure (storage/transport)	66 kPa ... 108 kPa (up to 3500 m above sea level)
Permissible humidity (storage/transport)	5 % ... 95 % (non-condensing)
Permissible humidity (operation)	5 % ... 95 % (non-condensing)

Connection data

Conductor cross section AWG	30 ... 12
Stripping length	7 mm
Conductor cross section, flexible	0.2 mm ² ... 2.5 mm ²
Connection method	Screw connection
Conductor cross section, rigid	0.2 mm ² ... 2.5 mm ²

Notes

Utilization restriction

EMC note	EMC: class A product, see manufacturer's declaration in the download area
----------	---

Environmental Product Compliance

REACH SVHC	Lead 7439-92-1
China RoHS	Environmentally Friendly Use Period = 10;
	For details about hazardous substances go to tab "Downloads", Category "Manufacturer's declaration"

Product properties

Type	Block design
MTTF	173.5 Years (MIL-HDBK-217F standard, temperature 25°C, operating cycle 100%)

Switch functions

Additional functions	Autonegotiation
----------------------	-----------------

Switch - FL SWITCH SFNB 5TX - 2891001



<https://www.phoenixcontact.com/in/products/2891001>


Basic functions	Unmanaged switch / auto negotiation, complies with IEEE 802.3, store and forward switching mode
MAC address table	1k
Status and diagnostic indicators	LEDs: U _S , link and activity per port

Switch - FL SWITCH SFNB 5TX - 2891001




<https://www.phoenixcontact.com/in/products/2891001>

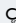
Approvals


UL Listed 


cUL Listed 

EAC 

KC 

IECEE CB Scheme 

UL Listed 

cUL Listed 

cULus Listed

UL Listed 

cUL Listed 

Switch - FL SWITCH SFNB 5TX - 2891001

<https://www.phoenixcontact.com/in/products/2891001>

Accessories

Surge protection for information technology

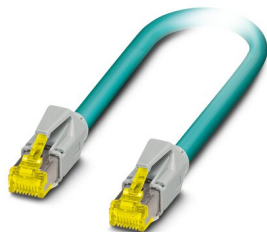
Surge protection for information technology - DT-LAN-CAT.6+ - 2881007



Surge protection in accordance with Class E_A (CAT6_A), for Gigabit Ethernet (up to 10 Gbps), token ring, FDDI/CDDI, ISDN, and DS1. Suitable for Power over Ethernet (PoE+) "Mode A" and "Mode B". RJ45 attachment plug with separate grounding cable and ground connection snap-on foot for NS 35 DIN rails.

Data cable preassembled

Data cable preassembled - NBC-R4AC-R4AC-IE8A/.../... - 1411854



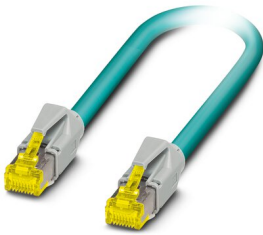
Patch cable, degree of protection: IP20, number of positions: 8, 10 Gbps, CAT6_A, cable outlet: straight, Ethernet

Switch - FL SWITCH SFNB 5TX - 2891001

<https://www.phoenixcontact.com/in/products/2891001>

Data cable preassembled

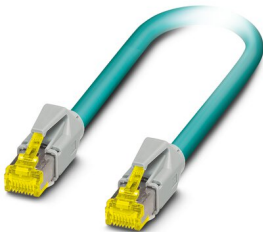
Data cable preassembled - NBC-R4AC/10G-R4AC/10G-94F/2,0 - 1408360



Patch cable, CAT6_A, 4-pair, shielded, connection not crossed (line), assembled at both ends with RJ45/IP20 connectors, outer sheath material: PUR, length: 2.0 m

Data cable preassembled

Data cable preassembled - NBC-R4AC/10G-R4AC/10G-94F/3,0 - 1408365



Patch cable, CAT6_A, 4-pair, shielded, connection not crossed (line), assembled at both ends with RJ45/IP20 connectors, outer sheath material: PUR, length: 3.0 m

Patch cable

Patch cable - FL CAT5 PATCH 0,5 - 2832263



Patch cable, CAT5, assembled, 0.5 m

Switch - FL SWITCH SFNB 5TX - 2891001

<https://www.phoenixcontact.com/in/products/2891001>

Patch cable

Patch cable - FL CAT5 PATCH 1,0 - 2832276



Patch cable, CAT5, assembled, 1 m

Patch cable

Patch cable - FL CAT5 PATCH 2,0 - 2832289



Patch cable, CAT5, assembled, 2 m

Mounting rail adapter

Mounting rail adapter - FL DIN RA - 2891053

The FL DIN RA is installed in a standard, 19-inch rack (EIA-310-D, IEC 60297-3-100) to allow DIN rail mounted equipment to be rack mounted.



Switch - FL SWITCH SFNB 5TX - 2891001

<https://www.phoenixcontact.com/in/products/2891001>

PCB plug

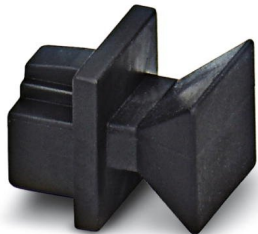
PCB plug - MSTB 2,5/ 3-ST - 1754465



PCB connector, nominal cross section: 2.5 mm², color: green, nominal current: 12 A, rated voltage (III/2): 320 V, contact surface: Tin, type of contact: Female connector, Number of potentials: 3, Number of rows: 1, Number of positions per row: 3, number of connections: 3, product range: MSTB 2,5/..-ST, pitch: 5 mm, connection method: Screw connection with tension sleeve, Screw head form: L Slotted, conductor/PCB connection direction: 0 °, Locking clip: - Locking clip, plug-in system: CLASSIC COMBICON, Locking: without, Assembly: without, type of packaging: packed in cardboard

Protective cap

Protective cap - FL RJ45 PROTECT CAP - 2832991



Dust protection caps for RJ45 socket

Safety locking

Safety locking - FL SEC PAC 4TX - 2832865

Layer1 security elements for four RJ45 network connections for use with patch boxes and panels



Switch - FL SWITCH SFNB 5TX - 2891001

<https://www.phoenixcontact.com/in/products/2891001>

End block

End block - E/NS 35 N - 0800886

End clamp, width: 9.5 mm, color: gray



Phoenix Contact 2021 © - all rights reserved
<https://www.phoenixcontact.com>

PHOENIX CONTACT (I) Pvt. Ltd.
A-58/2, Okhla Industrial Area, Phase - II, New Delhi-110 020

+91.11.30262800
info@phoenixcontact.co.in